



File Name: Cool start rs-4g2 manual.pdf

Size: 3414 KB

Type: PDF, ePub, eBook

Category: Book

Uploaded: 30 May 2019, 14:57 PM

Rating: 4.6/5 from 665 votes.

Download Now!

Please check the box below to proceed.



I'm not a robot



reCAPTCHA
[Privacy](#) - [Terms](#)

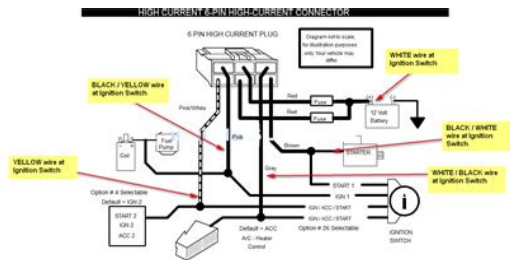
Book Descriptions:

Cool start rs-4g2 manual

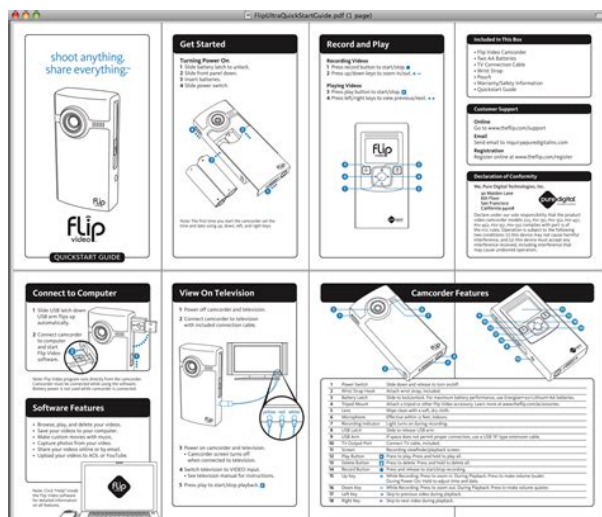


Our payment security system encrypts your information during transmission. We don't share your credit card details with thirdparty sellers, and we don't sell your information to others. Please try again. Please try again. In order to navigate out of this carousel please use your heading shortcut key to navigate to the next or previous heading. In order to navigate out of this carousel please use your heading shortcut key to navigate to the next or previous heading. Page 1 of 1 Start over Page 1 of 1 In order to navigate out of this carousel please use your heading shortcut key to navigate to the next or previous heading. Register a free business account Please try your search again later. This is the perfect system who needs that longer range or wants a remote start and the ability to replace the OEM remote with all the features this system offers. To calculate the overall star rating and percentage breakdown by star, we don't use a simple average. Instead, our system considers things like how recent a review is and if the reviewer bought the item on Amazon. It also analyzes reviews to verify trustworthiness. Please try again later. Hawkeyes75 5.0 out of 5 stars I really like the look and feel of the remotes and they arent overly bulky. The remote start brain is fairly small and easily fit up inside the dash, along with the iDatalink bypass. The instructions and diagrams arent the greatest in my opinion Not the worst tho, either, but they got the job done. I have done quite a few remote start installs, so i knew what to expect for the most part. If this is your first install, Id search YouTube for instructional videos for your particular car and even for this particular remote start. Programming the options for the remote start ended up being pretty easy. Easier than some other brands Ive used in the past. All in all Im very satisfied with this remote start and would highly recommend it. <http://diamondnational.com/Uploads/fiat-126-manuale-d-officina.xml>

- cool start rs-4g2 manual, 1.0, cool start rs-4g2 manual.



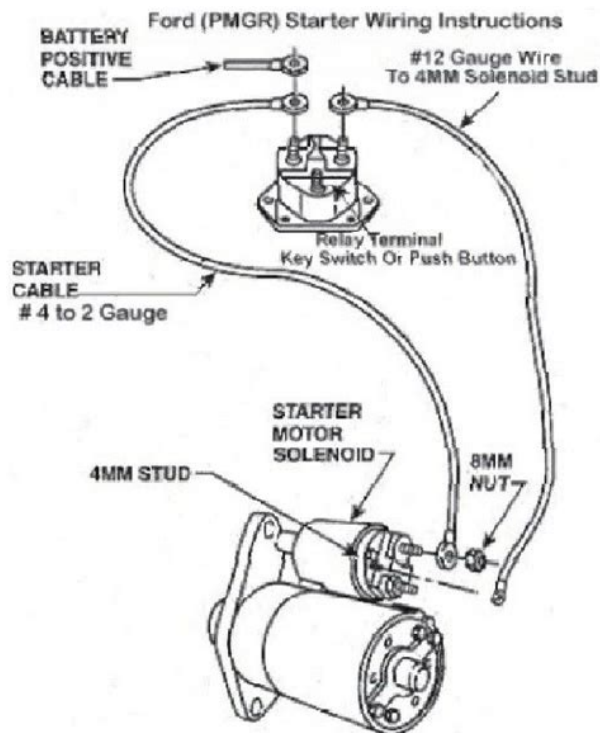
With installing I found out I needed a bypass so got one from BestBuy idatalink ALCA. The manual from the coolstart says option 5 supports idatalink so cool. Well, upon install the idatalink manual says to go data on most wires wire to wire between the two moduals and hard wire some to the car. I have a correct ac current hookup for tach, Im directly wired into my ebrake wire, hood pin is correctly installed and power comes from ignition which is 12v constant and ignition ground so.why cant I get into program mode And how can I possibly have a manual transmission error when every part of manual mode is set up DIRECTLY to its needed source.upon all that. There has been no help from any company on troubleshooting this issue. So to keep my shpeal short BE CAREFUL!!! You get what you pay for in the long run and if you have a newer manual car just dont bother with this one, youre better off with Fortin or idatalink for cheap and then compustar for the big spender.Will work best in cars with actual keys that are a bit older, with less antitheft technology. If you have an older GM car this can be easily installed. You can adapt it for different types of unlock circuits, up to 3 power feeds from ignition switch. Remote has a VERY long range. With line of sight, I was able to get.3 mile range from a building on a large campus down a hill across a street and down a side street on that street. I did not need to call tech support so I cannot speak to how good that is. Watch a lot of YouTube to help with this.Works flawlessly and if it did fail I would just buy another one and swap out the control unit. Installation of any remote start is not for the faint of heart. It can be an overwhelming task. Only install what you need. There are several wires I did not use, such as diesel glow plug warm up. You can often just make some assumptions with timing to compensate for any issues you might have. Ive also tried the remote through buildings and 2 floors. It has started every time.<http://www.kurashi-kyoiku.com/cms/dat/upimg/fiat-126-manual.xml>



I recently discovered that if you hold the lock button too long it acts as a panic button and starts honking the horn.I only use the remote start feature no power locks or anything else. Make sure you have a wiring diagram for your vehicle and study up ahead of time. It makes it quite a bit easier if you know what youre doing before you do it.Works well and range is decent. Install was fairly easy. Make sure you purchase a bypass module for your car. Remember this is a 1 way remote, it will not

tell you that the remote start activated. You will have to look out the window or hope the signal reached. I have not had any problems remote starting at work or home. For people who just want a remote starter and keyless entry without all the alarm system stuff this one is perfect. Still has plenty for programmable options that is also easy to do and they have great detailed instructions. Just bought two recently one had a power issue but they took it back right away. First time I've ever had a bad system from them. Was done in 5 mins. The old g2 antenna didn't work so I swapped out with new one and no problem. Great price, so far everything works good. The module is not working and i can't return it because it has been more than 10 days after delivery. So it's garbage now. Sorry, we failed to record your vote. Please try again I think the brain just died it only lasted 2 months. Sorry, we failed to record your vote. Please try again Sorry, we failed to record your vote. Please try again Sorry, we failed to record your vote. Please try again Sorry, we failed to record your vote. Please try again Sorry, we failed to record your vote. Please try again Sorry, we failed to record your vote. Please try again Sorry, we failed to record your vote. Please try again Sorry, we failed to record your vote. Please try again Im extremely happy with it. Sorry, we failed to record your vote. Please try again Sorry, we failed to record your vote.

Please try again Sorry, we failed to record your vote. Please try again In order to navigate out of this carousel please use your heading shortcut key to navigate to the next or previous heading. Thats okay. For some sites, we do too. However several sections and features of our Please consider disabling your ad blocker on our site and help support Thanks in advance! Upon hitting the start button on the remote, the car attempts to start and then cuts out very quickly with the result being the car did not start. The car does take a few seconds to start with the keyIf it doesnt start the first time, it should try twice more and then quit so the manual says. It never does this, and it never gives any LED indicators that there was a problem.When I was testing things out by testing my connections I noticed I wasnt pushing on the brake and there was 12 volts there. I corrected the issue and I didnt have anymore problems with programming after that. Double check your brake wire, maybe you are having the same problem. So, if that wire does have a constant 12volts on it, the starter would shut down after attempting to start and not try to start again thinking the remote start was aborted by the brake pedal. Maybe thats why there is no 2nd or 3rd attempt. It will shut off immediatly. You can try running a tach wire.Did you check all your wiring on the DLPK Im thinking your factory security is stopping it from tring again I went through the programming of the DLPK and according to the manual it programmed itself correctly every time. This topic is closed. Any user assumes the entire risk as to the accuracy and use of this information. Please. Something went wrong. View cart for details.User Agreement, Privacy, Cookies and AdChoice Norton Secured powered by Verisign. Please email us if youre running the latest version of your browser and you still see this message.



<http://schlammatlas.de/en/node/21907>

The actual Open Box product may differ in packaging and included accessories, but has been tested to ensure basic functionality. Click here for more details. Secure shopping made faster. Check out with PayPal. Some manufacturers place restrictions on how details of their products may be communicated. Some manufacturers place restrictions on how details of their products may be communicated. Some manufacturers place restrictions on how details of their products may be communicated. Some manufacturers place restrictions on how details of their products may be communicated. Im trying to find an online programming manual. Any suggestions The company doesnt list one. Crimestopper RS1304DPII Login to post Any suggestions I bought my car from a dealership with it but they did not know if it had it or what the key fob was. It locks and unlocks the. Have you tried to reprogram it. These remotes are very cheaply made and prone to key pad failure. To program the remote click this LINK, if that doesnt work buy anew one on eBay for cheap. Once you have done this press the lock button on the 2way key fob, horn will honk and the 2way will sing a little song to confirm programed, then press the lock button on the 1way key fob the horn honk will be your confirm programed. If it doesnt help sometimes theres a program block to prevent stealing equipment call a dealer What is the knocking or clicking sound it sounds like its coming from them where radio is at. Is that my starter. Its electrical interference. When you remote start it doesnt turn everything on like the key would. It really shouldnt do this, but it doesnt seem to hurt anything. If you had the remote installed recently ask the company about it. My company does sell these remotes, but like I said above, it is difficult to find anyone to program them. If you take it to the dealer, they will want you to purchase the keyless entry remote from them, and of course charge you a huge fee.

<http://idc504.com/images/745-transformer-management-relay-manual.pdf>

COMPUSITE INC. COOLSTART SERIES RT
1WAY FM / TWO 2WAY PAGING SYSTEM



REMOTE ENGINE STARTING SYSTEM
INSTALLATION INSTRUCTIONS

INTRODUCTION

Congratulations on your choice of a Compusite CoolStart™ system engine-started. This installation (hereinafter referred to as the "Installation") is made from a Compusite Key System (KSS) equipped with a remote start module (RSM) and two 1Way 400MHz/915MHz, 1Way FM, 2Way FM, and 2Way FM paging technology.

This installation book is designed for the installer or individual with an existing understanding of automotive electrical systems, along with the ability to read and understand the proper operation. Please consult the appropriate vehicle owner's manual for information on the proper installation. The book is provided as a reference, and the information contained herein may differ from your vehicle.

DISCLAIMER

Compusite Security Products, Inc. and its affiliates shall not be liable for any accident resulting from the use of this product. This system is designed to be professionally installed into a vehicle in strict accordance with the instructions and to perform as intended.

TECHNICAL SUPPORT (800) 888-8888

Monday - Friday 9:00am - 5:00pm Pacific Time Zone

Web Site: www.compupage.com

E-Mail: tech-support@compupage.com

COMPUSITE SECURITY PRODUCTS, INC.

11750 S. 10TH STREET, SUITE 100, DALLAS, TEXAS

75243-1100

This document contains information that is the property of Compusite Security Products, Inc. The information contained herein is confidential and its use is restricted to the user of this system. The user of this system is not responsible for any damage to the vehicle caused by the use of this system. The user of this system is not responsible for any damage to the vehicle caused by the use of this system.

If you can find a locksmith or mechanic in your area to program a keyless entry remote for your Volvo I would suggest purchasing the remote online and save some cash. Any suggestions Turn key and no ignition or ev mode. Dash is black except for a few warning lights. No speedometer screen, ev battery monitor. Answer questions, earn points and help others. The Cool Start RS4G2 system is a 1Way remote start system that uses 2 ultracompact extended range 4button transmitters to operate. The transmitters have a protective sliding cover over the buttons to prevent accidental button pressing while in your pocket. Keyless entry and trunk pop are included with this system as well as auto locking with ignition. Other features include 2Way data port, tachometer sensing, antigrind and horn honk. This booklet contains the information necessary for operatingStart connections, Flashing lights, and Brake Reset. For programming, the hood pin and program button areThese features may also. Consult with your installer beforehand to be sure of what is going to beOperation isThe manufacturer is notSuch modificationThis system is designed to be professionally installed into a car or vehicle in whichIT IS ABSOLUTELY THE OWNER'S SOLE RESPONSIBILITY TO A Understand the operation of this systemB Check for proper operation of the system prior to accepting delivery of the vehicle fromC Check and maintain the condition of the vehicle and all items relative to the properD Always leave the doors and windows closed and locked toDO NOT remote start the vehicle in a closed garage. Make sure that the garage door is open or there isFailure to observe this rule could result in injury or death from poisonous Carbon MonoxideNOTE The VEH button can be used to keep remote control from accidentally operating your vehicle. See Page 13 for additional information on how to use your remote to operate a second vehicleThis is typically used for operating left and right sliding doors and Gas Cap release.

<http://www.compupage.com/images/7440-manual.pdf>



Consult your installer. LED will remain solid in Valet Service Mode. The parking lights and Acc circuits will turn off while cranking. Parking Lights and ACC turns back on, and the doors lock. If needed, the engine can be For hard starting engines, the unit will allow a starter crank time of This should provide ample cranking time for difficult starts, but is limited to 4 seconds to Parking lights will turn off and the ignition key is You can now reset the engine run timer to allow for more running After a successful remote start, press. The parking lights will flash 3 times and LOCK with REMOTE START and After REMOTE START ABORT The default is Lock with Remote Start. The Run Time choices are Examples When you return, unlock, turn ignition ON and drive away. NOTE. If lock button is pressed twice in "Idle Down" mode, the remote start will abort. Double press. Engine should remain running. Locking doors a 2nd time aborts remote start. This allows the vehicle engine to remain running INDEFINITELY The parking lights continuously flash in this mode. This mode can be beneficial Press the Remote Start button for at least 1 second. Lights will turn on Engine should remain running. The parking lights will The vehicle will start by itself at the The optional Turbo Timer mode allows the CoolStart system to keep a Turbo or Turbo Diesel vehicle running. This is handy for turbo cooldown without the need for expensive turbo timers. To Activate Turbo Timer. With the engine running by key, press Remote Start Button with brake pedal depressed. As you release the The doors unlock after confirmation. This system features a Manual Transmission Mode. When exiting the vehicle, there is a safety check out There are 2 choices of operation The remote starter will turn on Press Lock a 2nd From this point, the system Arming OEM Alarm System. TURBO TIMER in Manual Transmission Mode. For Turbo Timer, press brake pedal before setting parking brake, then press the Remote Start Icon requires Turbo.

The engine will This system enables you to remotely lock and unlock the vehicle's doors if equipped with power locks via remote Lock or Unlock transmitter button as you leave or come near the vehicle. Parking lights will flash once for Lock and The parking light also turns off with ignition on. If the Auto Lock feature is turned on, and When the Auto Lock feature is turned on, the system will always unlock the doors when the Ignition is turned off. With this feature turned OFF, the system will not automatically lock or unlock the vehicle. See your installer for REMOTE PANIC Optional. For personal safety this unit now includes a panic feature. To sound the vehicle car horn, press the Lock Button on The vehicle horn will honk along with flashing parking lamps for 1 minute. Reset Remote Panic by pressing either the lock or unlock button. See next section for Horn Honk information. If vehicle horns are connected to the system, they will provide audible confirmation chirps for lock and unlock and The system can also be programmed to provide 3 chirps when a remote start is requested using the remote. Note. REMOTE TRUNK RELEASE OR DOMELIGHT ILLUMINATION Option 9. This CoolStart system includes an output that can be programmed to remotely release a factory electronic trunk or If you have the optional trunk pop. If your system is The dome light will turn off after 30 seconds, or turning the key on The Remote Start function WILL NOT operate when in Valet Mode. Repeat the process to exit VALET mode. Repeat this step Remote Start is inhibited. ANTIGRIND Optional, relay not included. This Optional feature prevents the user from accidentally grinding the starter if the Ignition key is turned too far to The AntiGrind requires the use of an HOOD

OPEN SAFETY Requires hood pin switch. Prevents remote starting engine when hood is open.

<http://www.a-fairys-choice.com/wp-content/plugins/formcraft/file-upload/server/content/files/162857380cce39---Business-vision-training-manual.pdf>

Eliminates risk of injury to someone working under the hood off If Remote Start button is pressed with the hood open, the The system will abort Remote Start any time the Prevents Unauthorized Driving of. Vehicle. This circuit shuts the system down immediately when brake pedal is pressed. Turn the ignition key to the If Remote Start button is pressed with the brake pressed, the See Remote Start Diagnostics on page 14. OEM ALARM INTERFACE May require optional Databus Module. This feature is designed to Disarm and Rearm Factory equipped security systems in conjunction with remote start This feature will maintain the original integrity and security of your Some vehicles require an optional Databus You should get 1 light flash confirming the remote is coded, then press See diagram The VEH button can be used to keep remote control from accidentally This means you can't After remote start you have to use the keys to unlock the door. Also, many new vehicles unlock the doors when disarming the factory alarm. This leaves the doors unlocked while. Remote Started. To resolve this problem, have your installer connect the door locks to the Remote Start Keyless. Entry. The Remote Starter with ReLock the doors after remote starting. Model RS3G4 and RS4G4. When you return to a remote started vehicle, just press the Unlock button on the remote control. Note There are 3 Remote Start Options see page 4. LED will continue flashing the error code until the ignition is turned on, it means the following. Be sure to tell your installer the Diagnostic code when taking vehicle in for service During these conditions the vehicle may not properly start The Remote Control uses two CR2025 Lithium 3 Volt Batteries. Simply remove the Phillips screw located behind The top cover snaps apart from the back cover. Slide old batteries out and remove. The plastic Screw Some vehicles require a Databus Module to Bypass the factory Immobilizer and operate the keyless entry.

cokhixaydung.com/images/uploads/files/8500-passport-manual.pdf

Databus modules are used to communicate with the vehicles computer at the OBD2 Data connector or Canbus Crimestopper Systems with DP Series have a direct Data Port Plug In for Features Include. Transponder Immobilizer. PassLock Immobilizer. Sliding Doors. O.E.M. Alarm Control. R.A.P. Shutdown. Power Door Locks. Priority Unlock. Trunk Release. Parking Lights. Courtesy Lights. Tachometer. Heated Seats. Rear Defrost. Driver 1 and 2 Memory presets. The actual features controlled depend on the vehicle and Databus module. Phone 800 9986880 These limits are designed to provide reasonable protection This equipment generates uses and can radiate radio frequency energy and, if not installed and used However, there is no guarantee that interference will not occur in a particular installation. If this equipment does cause harmful interference to radio or television reception, which can be Reorient or relocate the receiving antenna. Increase the separation between the equipment and receiver. Connect the equipment into an outlet on a circuit different from that to which the receiver PDF Version 1.3. Linearized No. Author Administrator. Creator pdfFactory www.pdffactory.com. Producer pdfFactory 3.22 Windows XP Professional. Create Date 20120803 1224520700. Page Count 17. NEW Crimestopper Rs00g5 Cool Starttm Addon Remotestart Module For Oem Syste.RSTX4G2, CS409TX, CS34TX, This transmitter will work with the following Crimestopper EZ Start, Cool Start, systems, Scotts 200020 20Inch Classic Push Reel Lawn Mower. NEW Crimestopper Rs00g5 Cool Starttm Addon Remotestart Module For Oem Syste.RSTX4G2, CS409TX, CS34TX, This transmitter will work with the following Crimestopper EZ Start, Cool Start, systems, Scotts 200020 20Inch Classic Push Reel Lawn Mower. By continuing to use Pastebin, you agree to our use of cookies as described in the Cookies Policy. OK, I Understand Sign Up, it unlocks many cool features.

Most of the remote start features can be controlled through an existing factory or aftermarket

remote keyless entry or alarm system. Pressing an auxiliary button on an Aftermarket system or pressing a button 3 times on a Factory keyless remote can activate a remote start using the 901. This is referred to in this manual as activating the “Green Start input wire”. Consult with your installer beforehand to be sure of what is going to be installed with your particular system. Operation is subject to the following two conditions 1 This device may not cause interference, and 2 this device must accept any interference that may be received, including interference that may cause undesired operation. The manufacturer is not responsible for any radio or TV interference caused by unauthorized modification to this equipment. Such modification could void the users authority to operate the equipment.

<https://labroclub.ru/blog/boss-dr-660-manual>